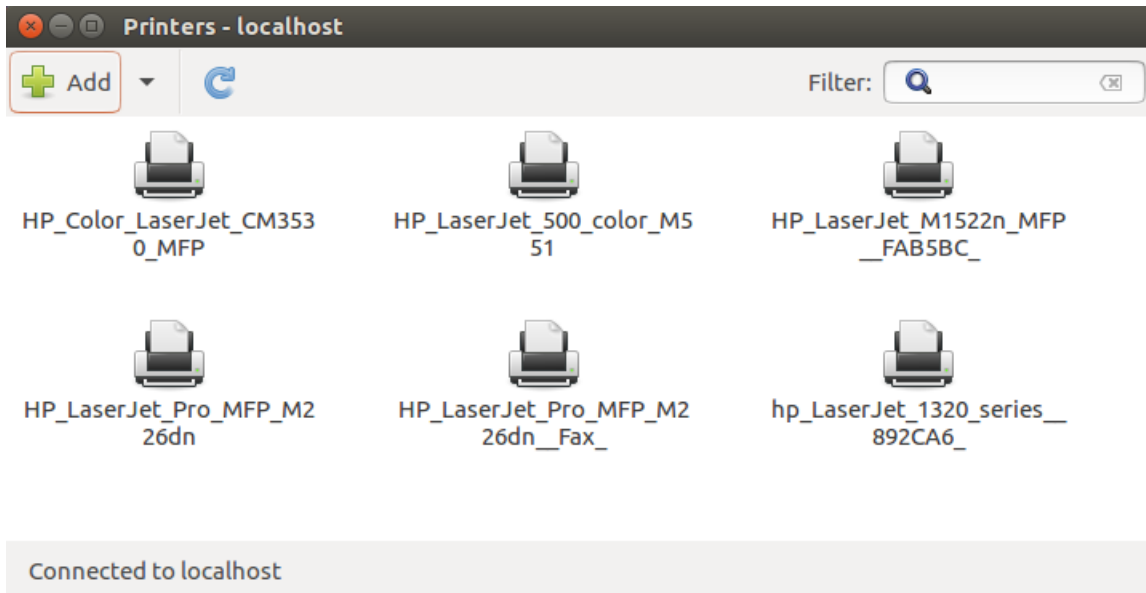
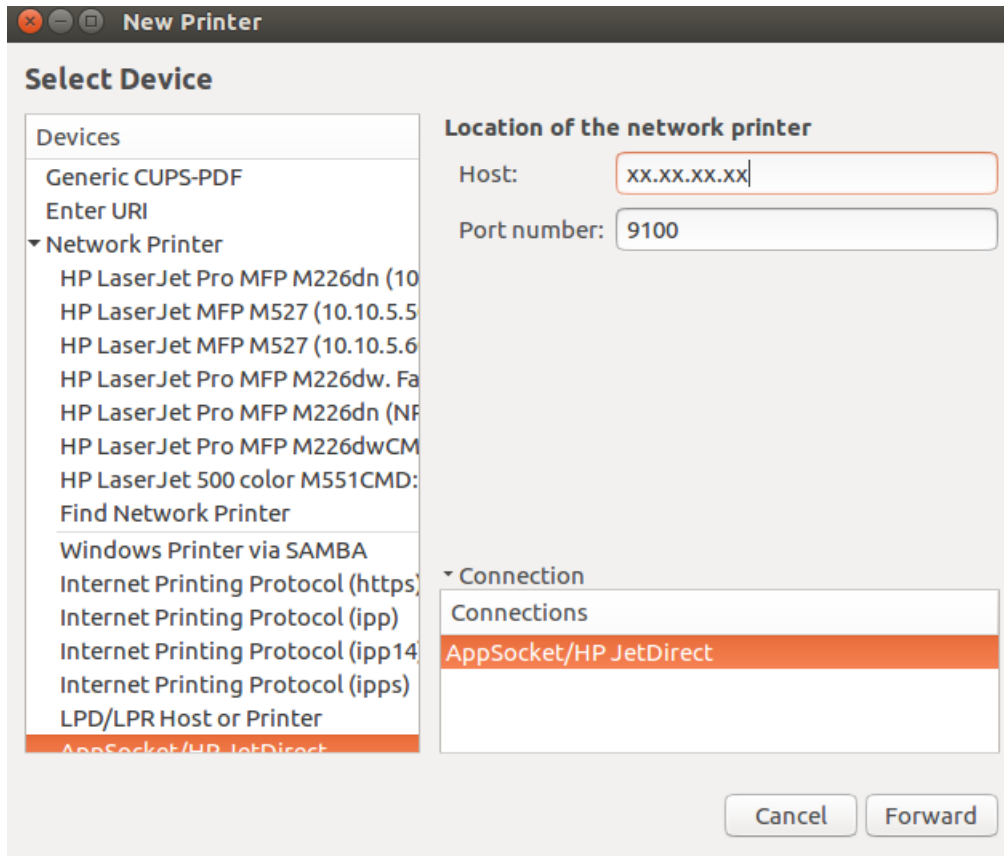


Install the HPLIP package from <https://developers.hp.com/hp-linux-imaging-and-printing/install/manual/index.html>

1. Select “ADD”

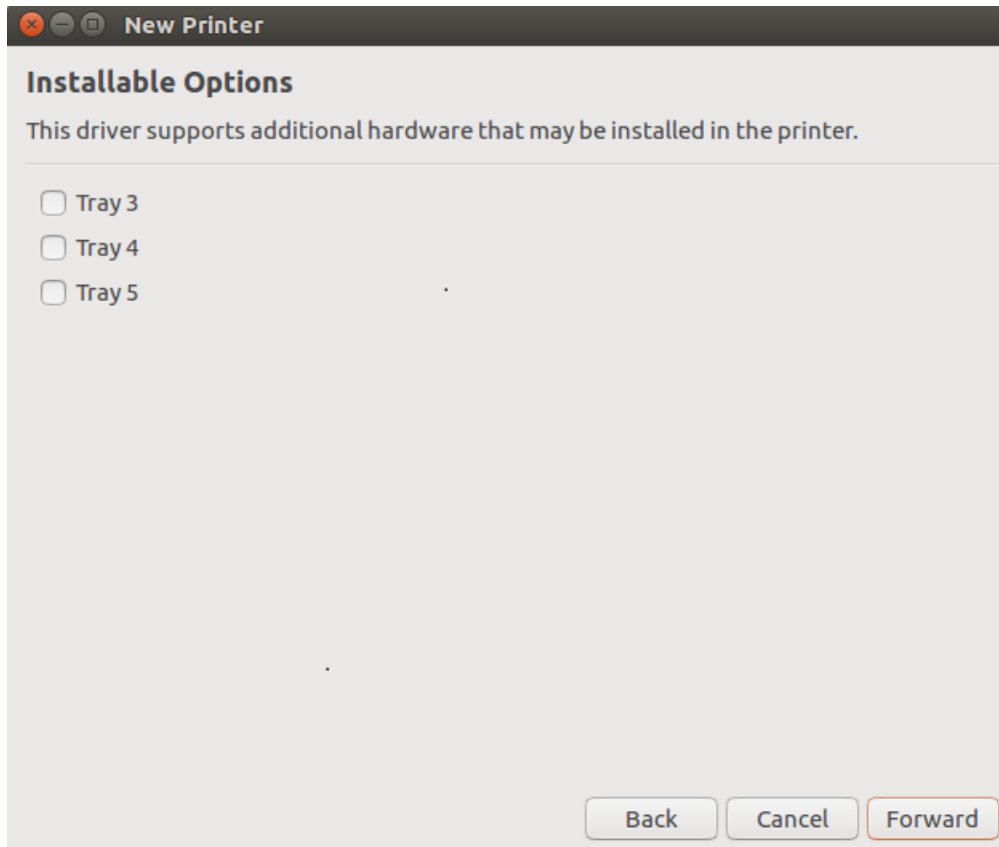


2. Select JetDirect (incase of HP printer) and enter the Printer IP address

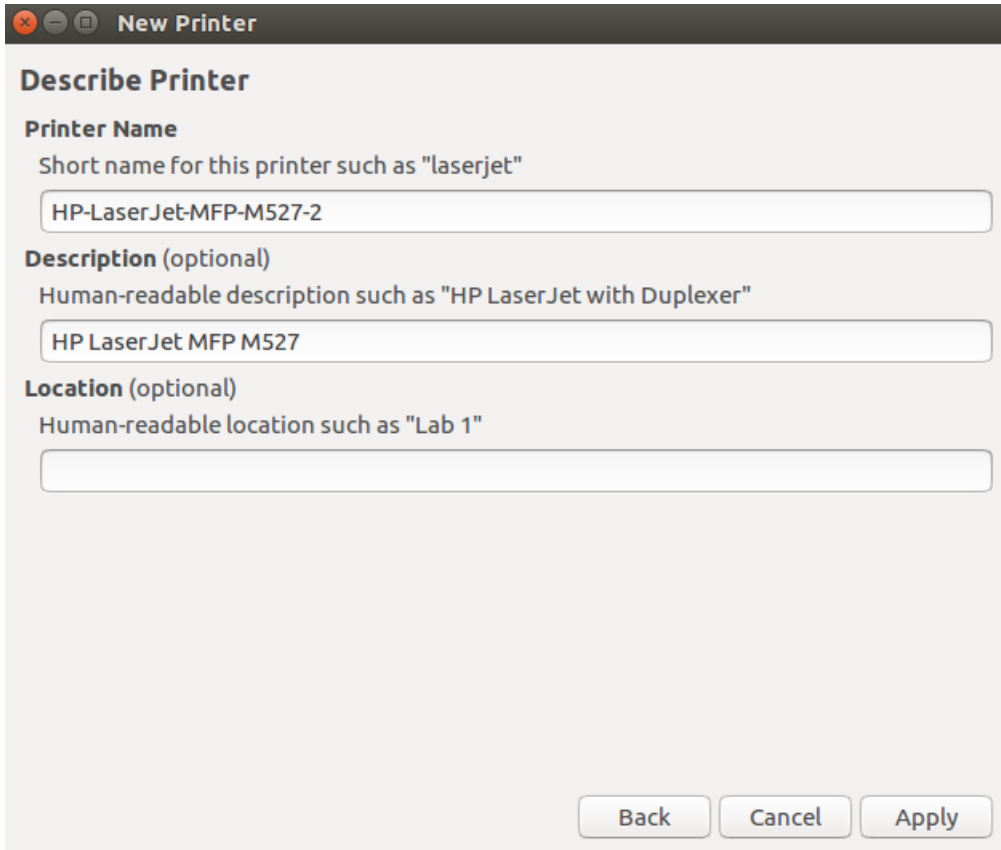


Add printer IP address of the corresponding floor only where your system is placed.

3. Select Forward



4. Select Apply



The image shows a window titled "New Printer" with a dark header bar. Below the header, the text "Describe Printer" is displayed in bold. There are three sections, each with a label and a text input field:

- Printer Name**: "Short name for this printer such as "laserjet"". The input field contains "HP-LaserJet-MFP-M527-2".
- Description (optional)**: "Human-readable description such as "HP LaserJet with Duplexer"". The input field contains "HP LaserJet MFP M527".
- Location (optional)**: "Human-readable location such as "Lab 1"". The input field is empty.

At the bottom right of the window, there are three buttons: "Back", "Cancel", and "Apply".