

Windows 7 Setup for “eduroam”

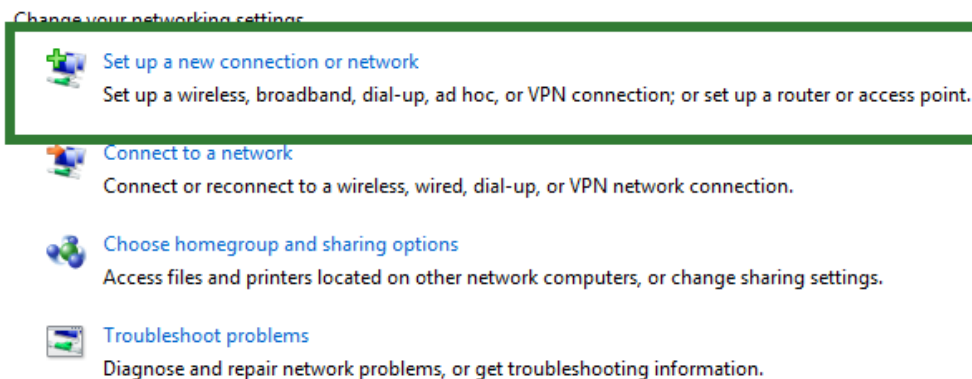
1. Windows taskbar click on the Network icon.



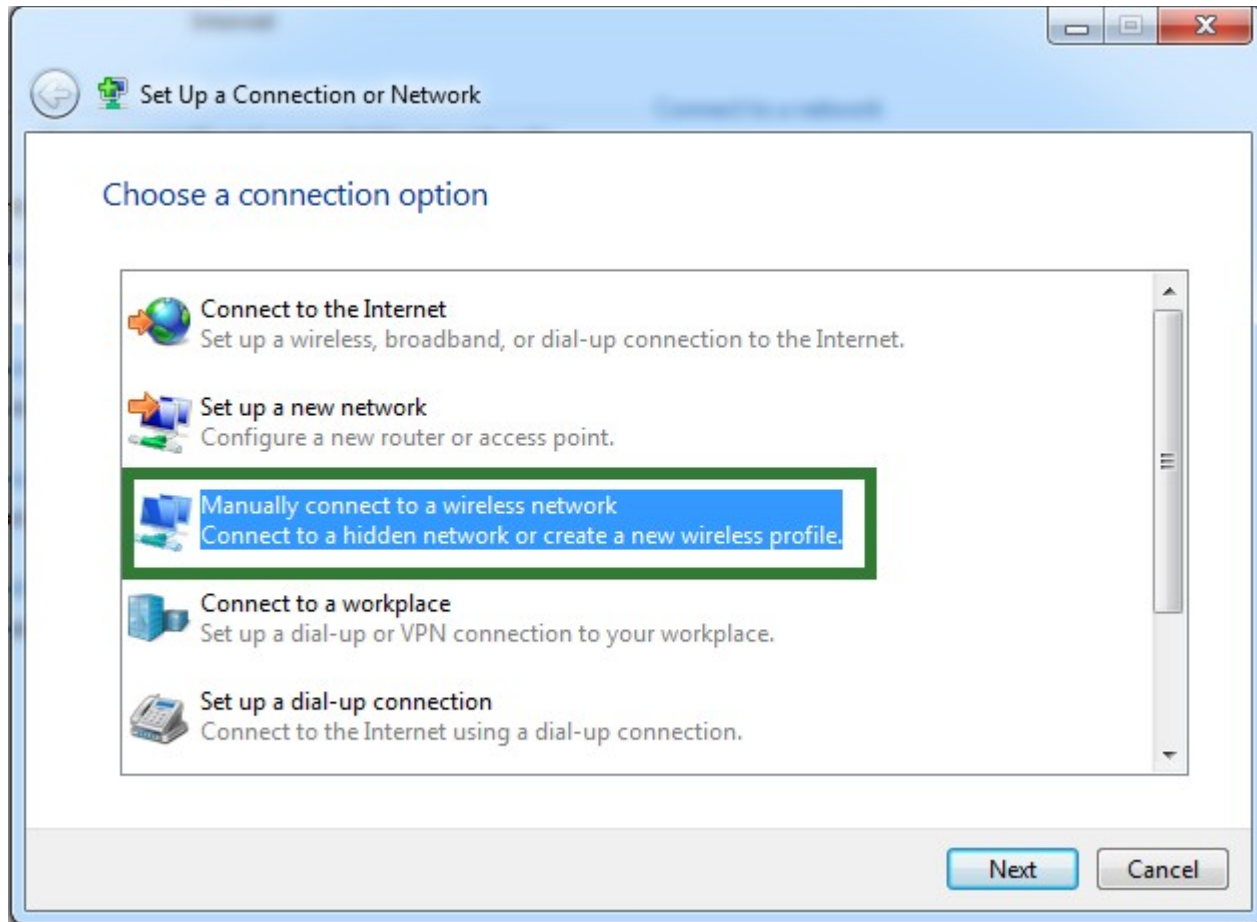
2. Click on “Open Network and Sharing Center”



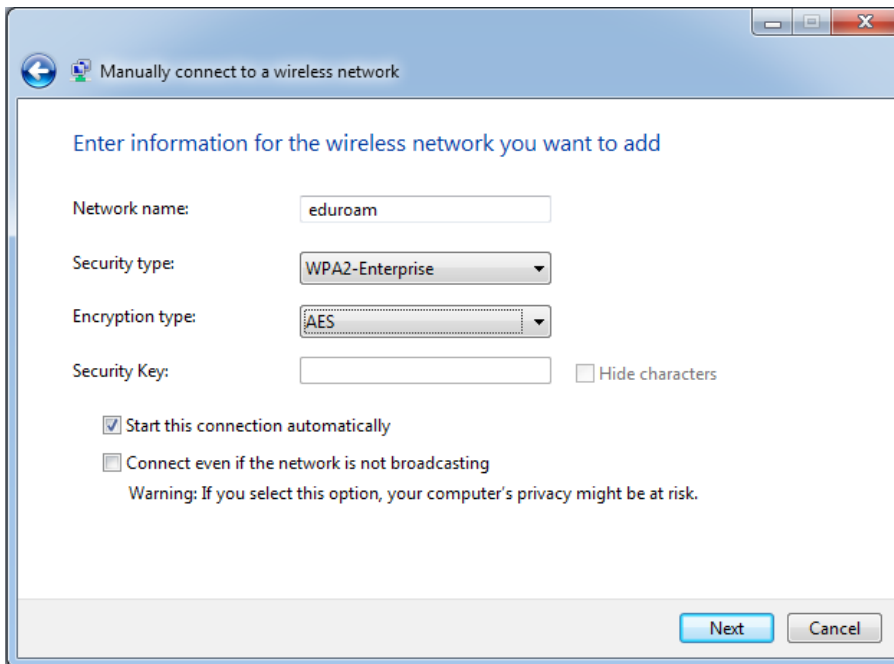
3. Click on “Setup a new connection or Network”



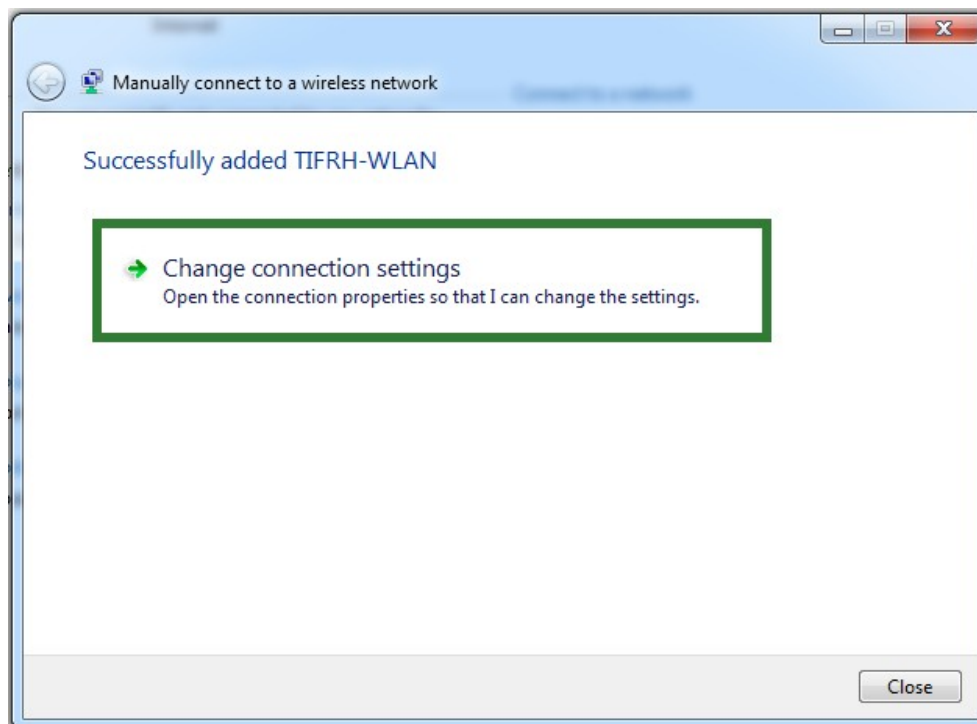
4. Click on “Manually Connect to a wireless Network”



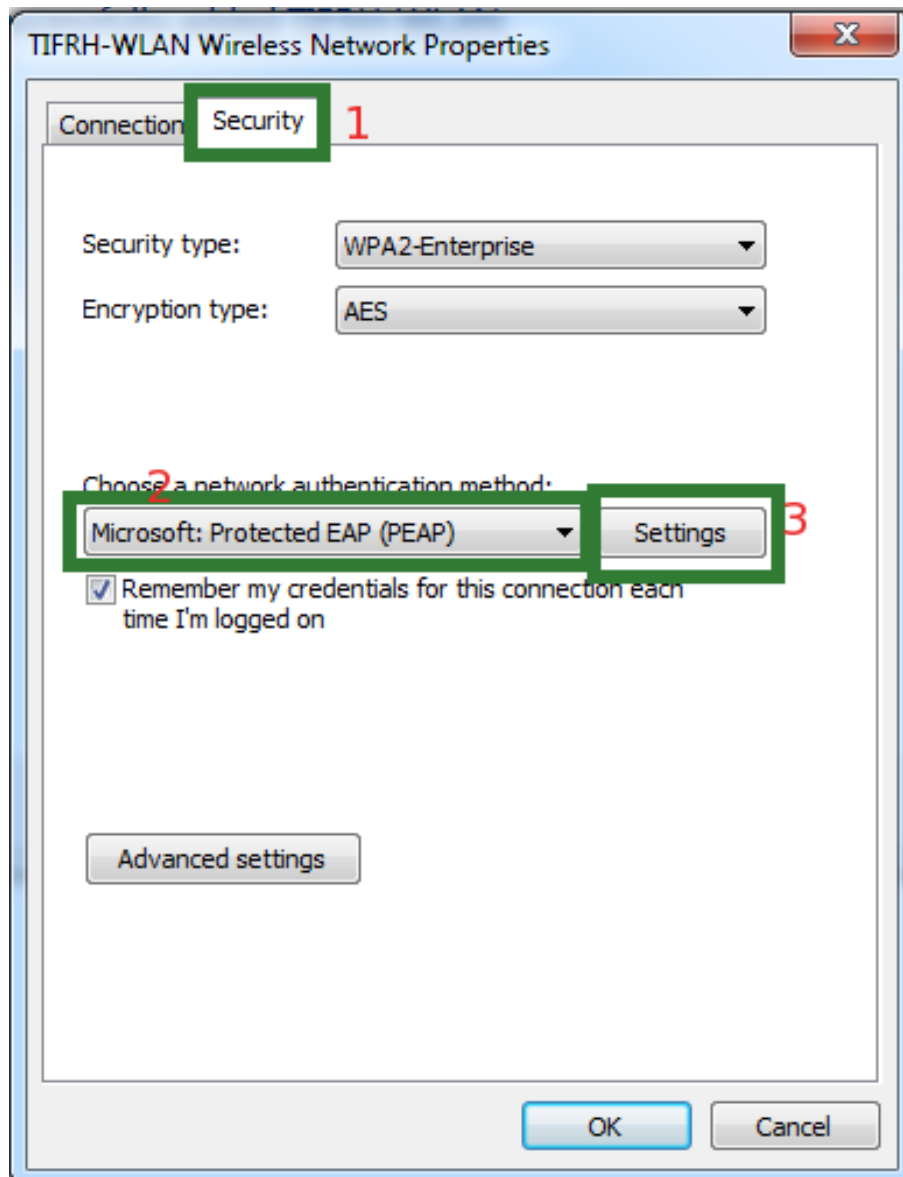
5. Enter Netwrk Name : eduroam
Select Security Type : EAP2-Enterprises
Encryption Type : AES
Click on “Next”



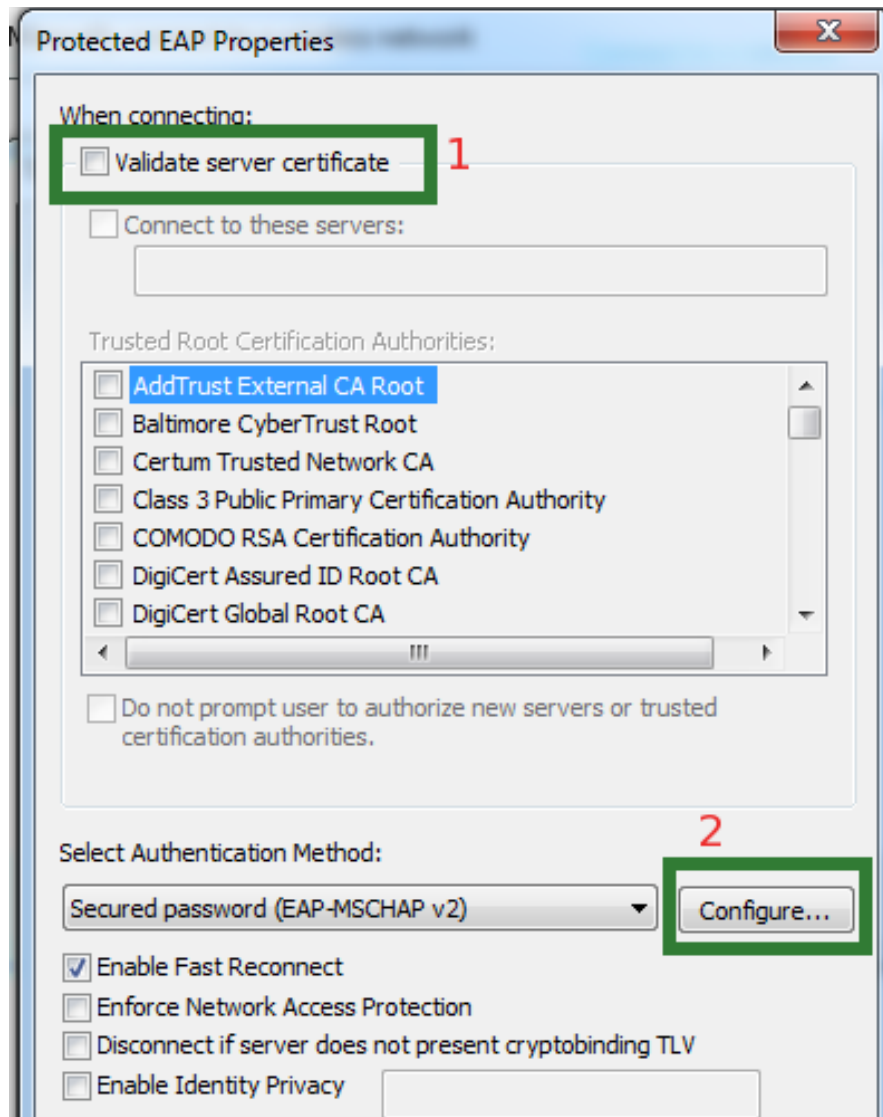
6. Click on “Change Connection Settings”



7. Select the “Security” tab . Chose network authentication method as “Microsoft : protected EAP (PEAP) ” and Click on “Settings”



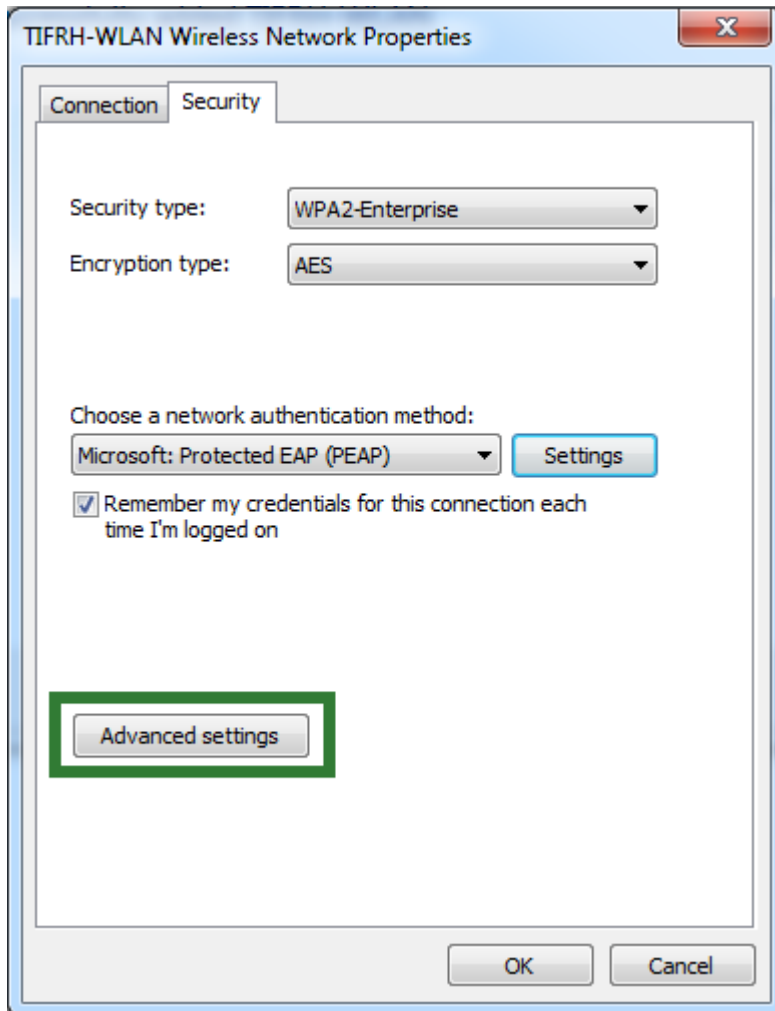
8. Un-select “Validate Server Certificate” and Click on “Configuration”



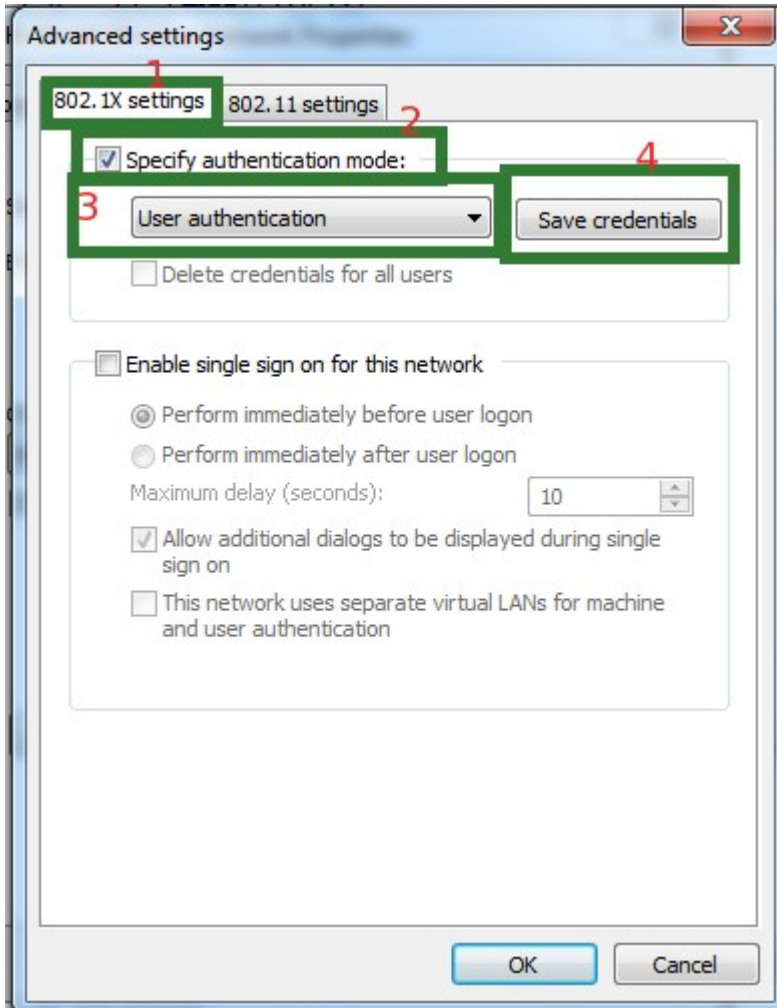
9. Un-select the checkbox and click “OK”



10. Click on “Advance Settings”



11.
 1. Select the tab “802.1x Settings”
 2. check the “Specify authentication mode”
 3. select “User Authentication”
 4. click on “Save Credentials”



12. Enter your username and password, Click ok. It will get connected now.

